



ch102

Early 18th Century Dutch Queen Ann Chair

Approximate Dimensions

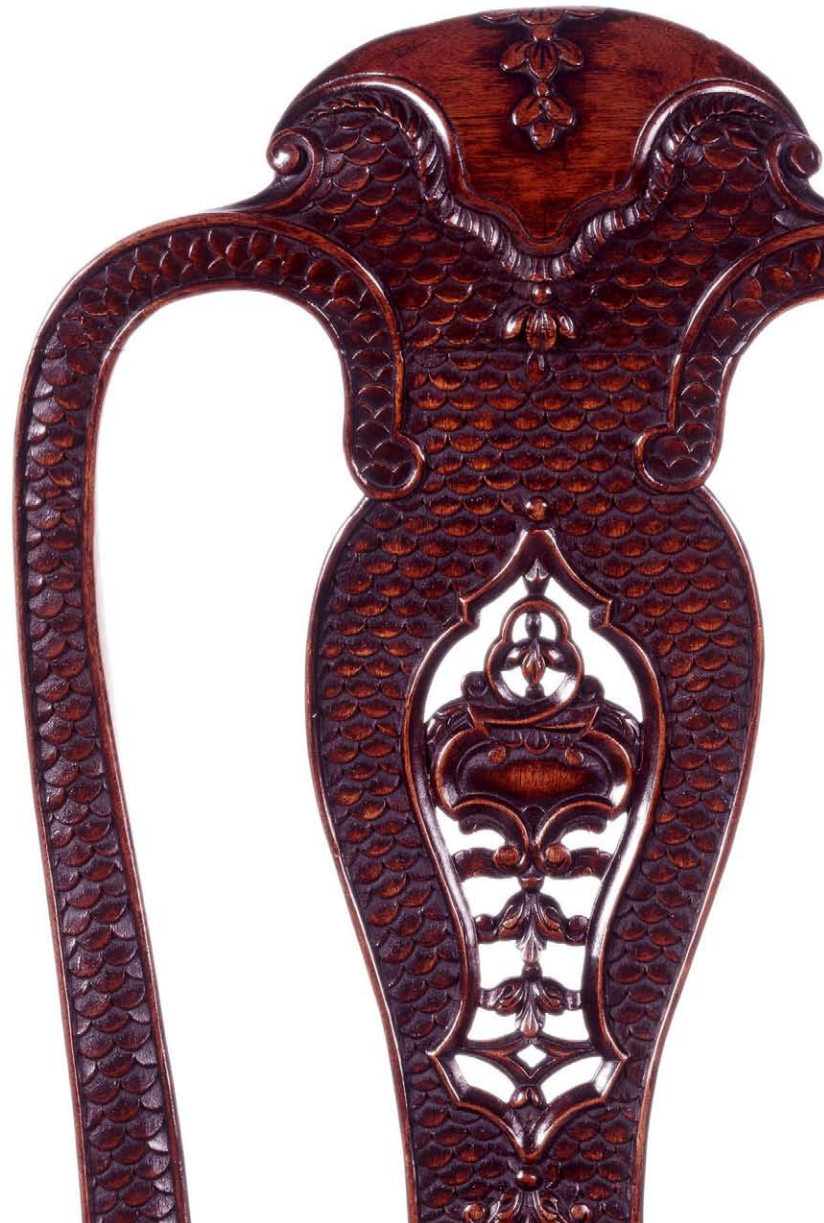
22 1/2w, 19 1/2 d, 45 1/4h, 19 1/2sh, 16 1/4sd

Available Finishes:

Deep Walnut over Teak-(shown), Amber Walnut over Teak, Ebonized walnut over Teak

The original upon which this chair is based is in the manner of Daniel Marot. c. 1720. It features a shaped open back carved with a fish scale pattern, the pierced splat carved with floral motifs, the drop-in serpentine seat on cabriole legs carved with a shell motif and pad feet joined by a carved stretcher.

The original chair upon which this is based is in the Collection of Mr. and Mrs. Gordon Getty, San Francisco.



phone: 866.343.3890
fax: 415.346.9216
email: info@anngetty.com